



NORSK

KONFIGURER LED-INDIKASJONER

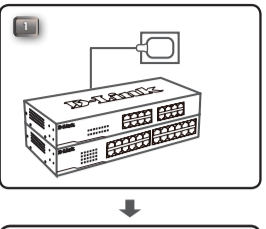
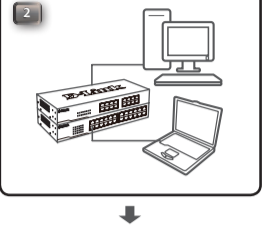
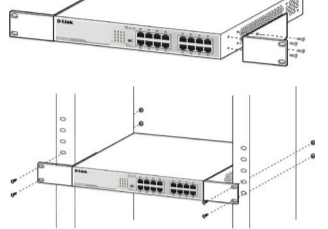
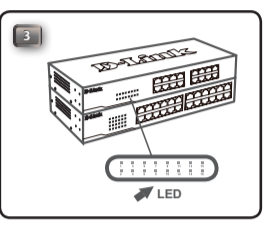


Table with columns: LED, Farge, Status, Beskrivelse. Rows include Strøm (system), Forbindelse/Aktivitet/Hastighet (port).

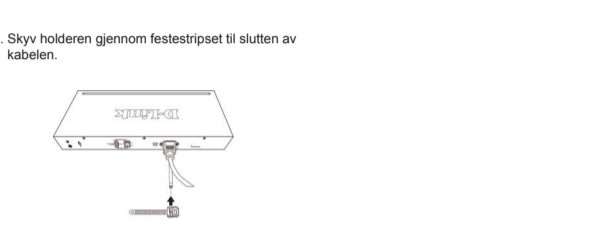
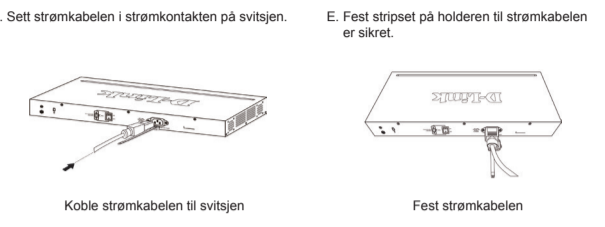
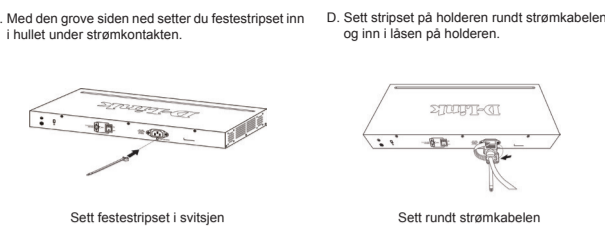


STATIVMONTERING
Hvis du vil installere enheten i et stativ, fester du monteringsbraketterne til svitsets sidepaneler...



INSTALLERE STRØMKABELKLIPSET

For å unngå utilsiktede fjerning av strømkabelen, anbefales det å installere strømkabelklipset sammen med strømkabelen.



TEKNISK STØTTE dlink.com/support

DANSK

OPSÆTNING INDIKATIONER AF LED-LAMPER

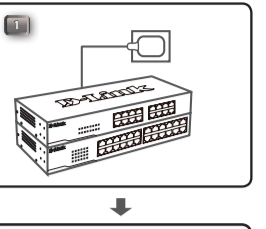
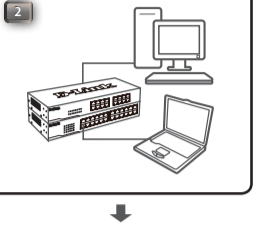
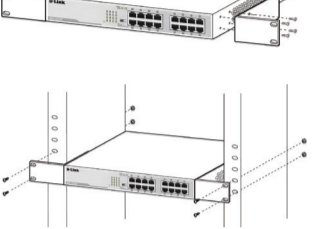
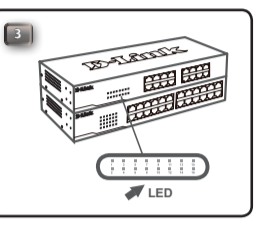


Table with columns: LED, Farve, Status, Beskrivelse. Rows include Strøm (system), Forbindelse/funktion/hastighed (port).

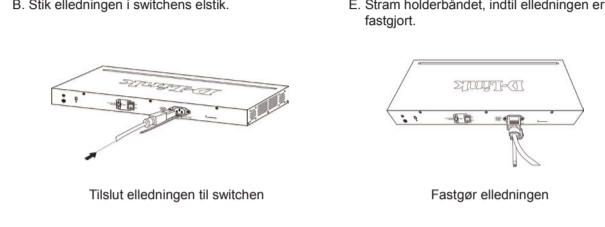
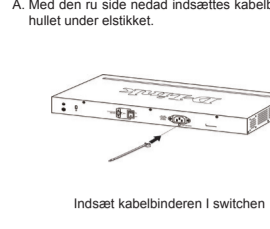


INSTALLATION I RACK
For at installere i et rack skal du fastgøre monteringsbeslagene til switchens sidepaneler...



MONTERING AF ELLEDNINGSCLIPS

For at undgå utilsigtet fjernelse af elledningen anbefales det at montere elledningsclipsen sammen med elledningen.



TEKNISK SUPPORT dlink.com/support

SUOMI

KOKOONPANO MERKKIVALOJEN ILMAISUT

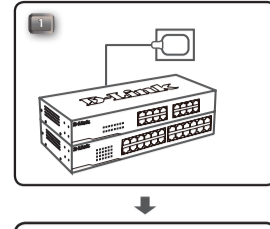
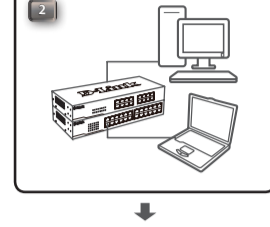
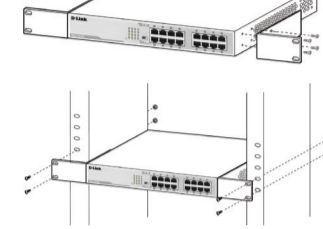
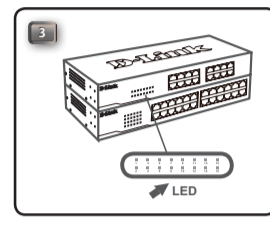


Table with columns: Merkivalo, Väri, Tila, Kuvaus. Rows include Virta (järjestelmä), Yhtäysajankohde (portti).

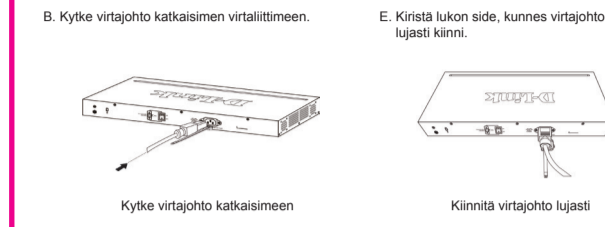
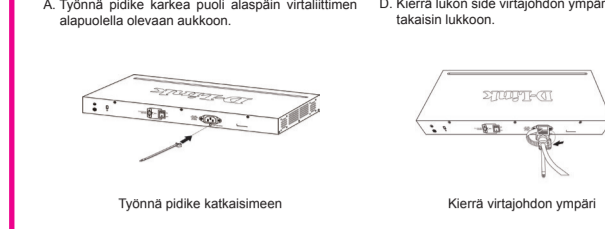


TELINEEN ASENNUS
Asenna telineeseen kiinnittämällä asennustuet kytkimen sivupaneeliin...



VIRTAJOHTOPIDIKKEEN ASENTAMINEN

Jotta virtajohto ei irtoa vahingossa, on suositeltavaa asentaa virtajohtopidike yhdessä virtajohdon kanssa.



TEKNINEN TUKI dlink.com/support

SVENSKA

KONFIGURERA LYSDIODSINDIKERING

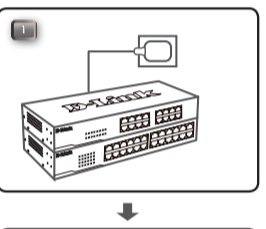
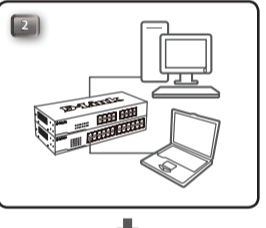
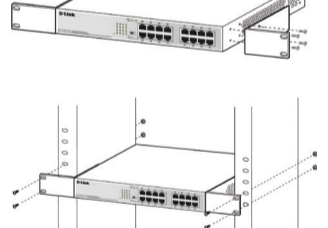
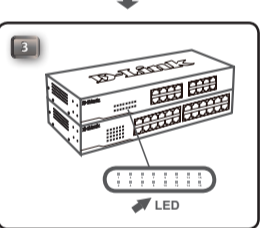


Table with columns: Lysdiöd, Färg, Status, Beskrivning. Rows include Ström (system), Link/Akt/hastighet (port).

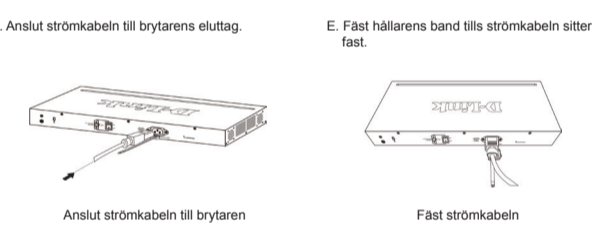
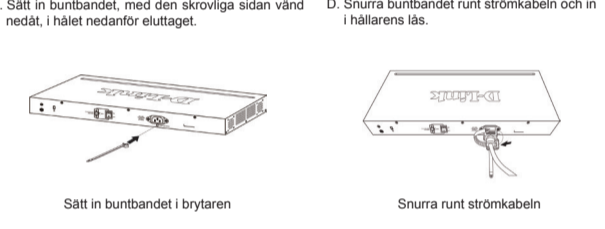


RACKINSTALLATION
Ett rack installeras genom att fästa monteringsfästena till switchens sidopaneler...



INSTALLERA STRØMKABELKLÄMMA

För att förhindra att strömkabeln dras ut av misstag, bör man sätta in en strömkabelklämma samtidigt med strömkabeln.



TEKNISK SUPPORT dlink.com/support

PORTUGUÊS

CONFIGURAR INDICAÇÕES LED

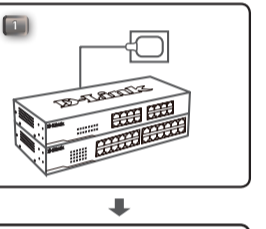
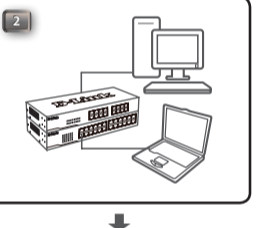
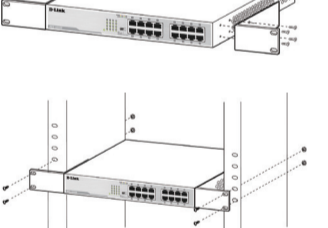
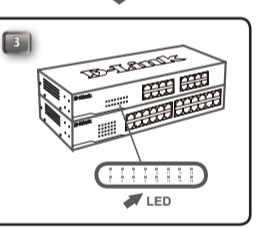


Table with columns: LED, Cor, Estado, Descrição. Rows include Energia (sistema), Ligação/Funcionamento/velocidade (porta).

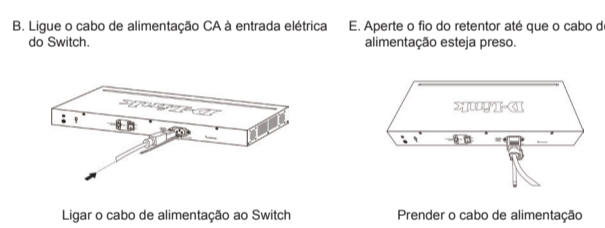
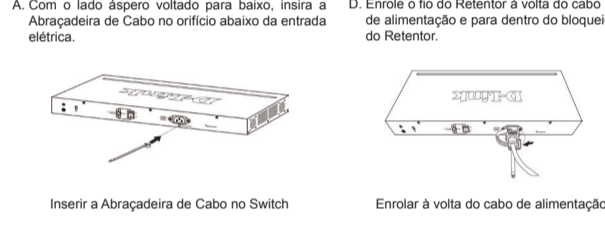


INSTALAÇÃO DA RACK
Para instalar numa rack, aplique os suportes de apoio nos painéis laterais do computador...



INSTALAÇÃO DO ENCAIXE DO CABO DE ALIMENTAÇÃO

Para evitar a remoção acidental do cabo de alimentação CA, recomenda-se a instalação do encaixe do cabo de alimentação CA no orifício abaixo da entrada elétrica.



ASSISTÊNCIA TÉCNICA dlink.com/support

ΕΛΛΗΝΙΚΑ

ΔΙΑΜΟΡΦΩΣΗ ΕΝΔΕΙΞΕΙΣ LED

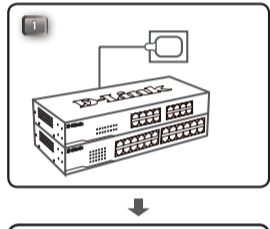
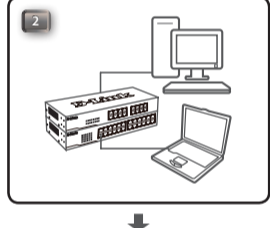
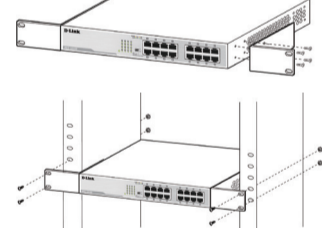
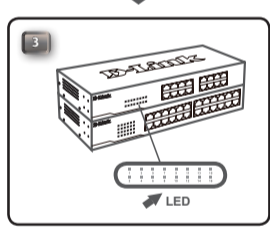


Table with columns: LED, Χρώμα, Κατάσταση, Περιγραφή. Rows include Τροφοδοσία ρεύματος (σύστημα), Σύνδεση/Λειτουργία/Ταχύτητα (Πύλη).

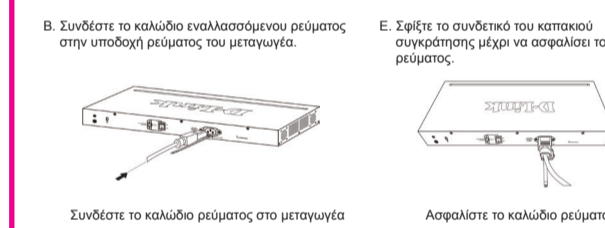
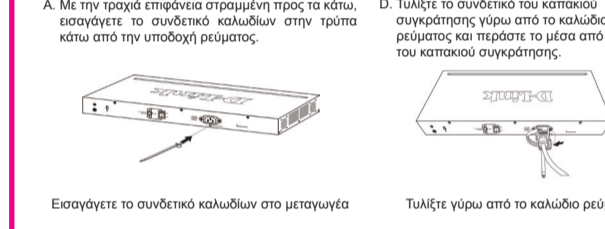


ΕΓΚΑΤΑΣΤΑΣΗ ΣΕ RACK
Για εγκατάσταση σε rack, προσαρτήστε τους βραχίονες στήριξης στα πλευρικά πάνελ του μεταγωγέα...



ΕΓΚΑΤΑΣΤΑΣΗ ΤΟΥ ΣΥΝΔΕΤΗΡΑ ΚΑΛΩΔΙΟΥ ΡΕΥΜΑΤΟΣ

Για να αποφευχθεί η ακούσια απασύνδεση του καλωδίου εναλλασσόμενου ρεύματος, σας συνιστούμε να εγκαταστήσετε τον συνδετήρα καλωδίου ρεύματος μαζί με το καλώδιο ρεύματος.



TECHNICAL SUPPORT dlink.com/support

HRVATSKI

POSTAVLJANJE ZNAČENJA LED INDIKATORA

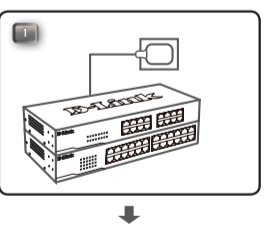
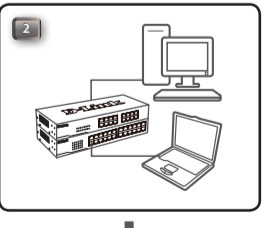
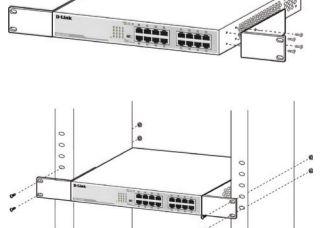
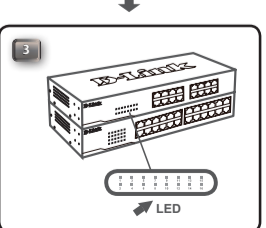


Table with columns: LED LAMPICA, Boja, Stanje, Opis. Rows include Napajanje (sustava), Kontrolna lampica vozila/aktivnosti/brzine (Link/Act/Speed) (port).

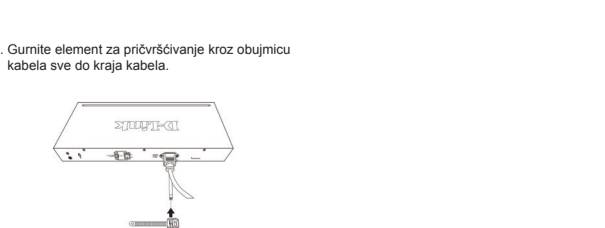


INSTALACIJA U STALAK
Za instaliranje u stalak, postavite nosače za montažu na bočne panele preklopnika...



MONTAŽA SPOJNICE KABELA ZA NAPAJANJE

Kako biste spriječili slučajno isključivanje kabela izmjeničnog napajanja (AC), preporučuje se da zajedno s njim montirate i spojnicu kabela za napajanje.



TEHNIČKA PODRŠKA dlink.com/support

SLOVENSKI

NAMESTITEV OZNAKE LED

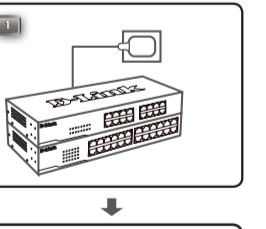
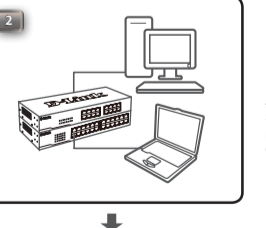
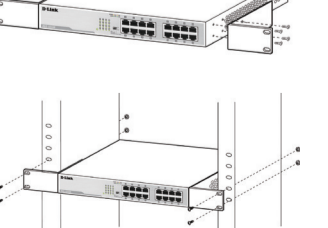
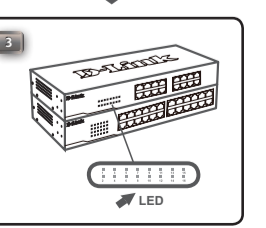


Table with columns: LED, Barva, Stanje, Opis. Rows include Napajanje (sistem), Povezava/aktivnost/hitrost (vrata).

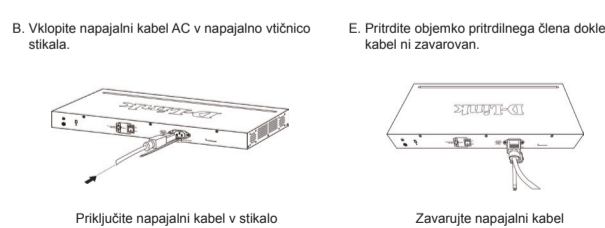


NAMESTITEV V OMARO
Za namestitev v omaro pritrpite montažna nosilca na stranski pobočji estakla...



NAMESTITEV ZAPONKE NAPAJALNEGA KABLA

Da preprečite neželjen izklop napajalnega kabla AC, je priporočeno, da skupaj z napajalnim kablom namestite zaponko napajalnega kabla.



TEHNIČNA PODPORA dlink.com/support

ROMÂNĂ

CONFIGURARE INDICAȚII LED

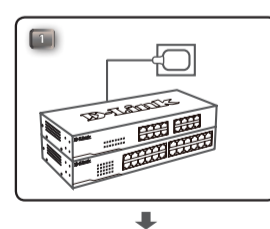
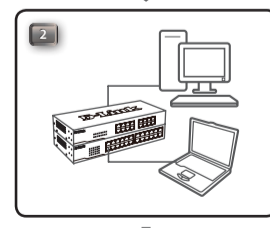
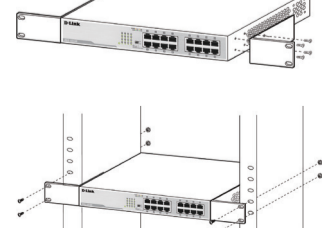
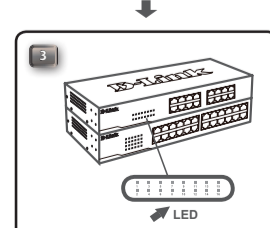


Table with columns: LED, Culoare, Stare, Descriere. Rows include Alimentare (sistem), Link/Act/Viteză (per port).

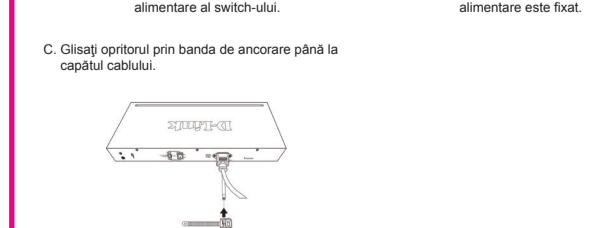
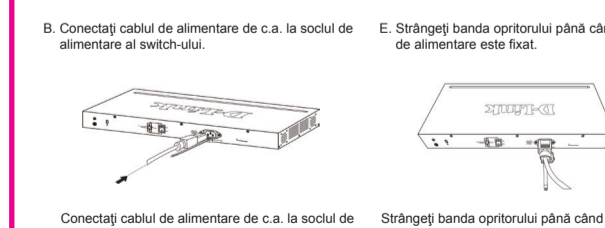
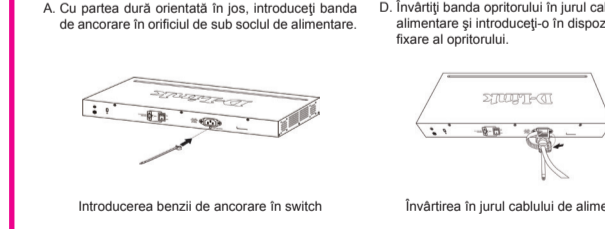


MONTARE ÎN RACK
Pentru instalare în rack, atașați clemele de fixare de panourile laterale ale switch-ului...



INSTALAREA CLEMEI CABLULUI DE ALIMENTARE

Pentru a împiedica scoaterea accidentală a cablului de alimentare de c.a., se recomandă să instalați clema cablului de alimentare împreună cu cablul de alimentare.



SUPPORT TEHNIC dlink.com/support