

D-Link

Quick Installation Guide

This product can be used with the following operating systems:
Windows XP, Me, 2000, 98se/98
Macintosh OS v10.1



DUB-C2
2-Port USB 2.0
Cardbus Adapter

Before You Begin

You must have at least the following:

- Windows XP/Me/2000/98se/98 or Macintosh OS v10.1
- Pentium Class CPU or Higher
- One Available 32-bit Cardbus Slot
- CD-ROM Drive

Check Your Package Contents

These are the items included with your purchase:

If any of the below items are missing, please contact your reseller.



• DUB-C2 Hi-Speed USB 2.0 Notebook Cardbus Adapter



• CD-ROM (containing Drivers, Installation Guide and Warranty)



Windows Users

Run the Driver CD before you install the DUB-C2.

The Driver CD contains an installation program that significantly simplifies the installation process.

1

Insert the D-Link CD-ROM Into Your Computer

Mac users please proceed to the next page.

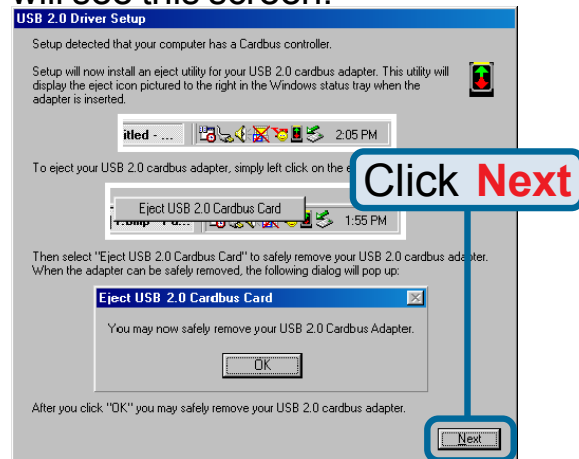
Turn on your computer and Insert the D-Link DUB-C2 Driver CD in the CD-ROM drive.

Click **Install Driver**

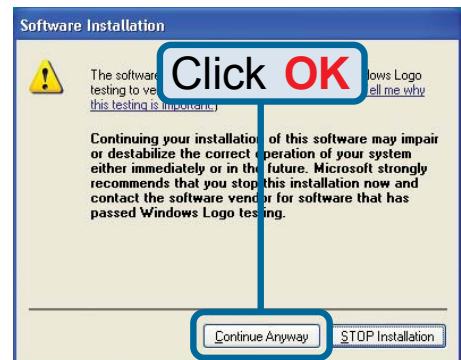


If the Autorun screen does not automatically start, click on **Start > Run**, enter "**D:\Autorun.exe**" and click **OK**. "**D**" represents the letter of your CD-ROM drive. Replace it if your CD-ROM drive is a different letter.

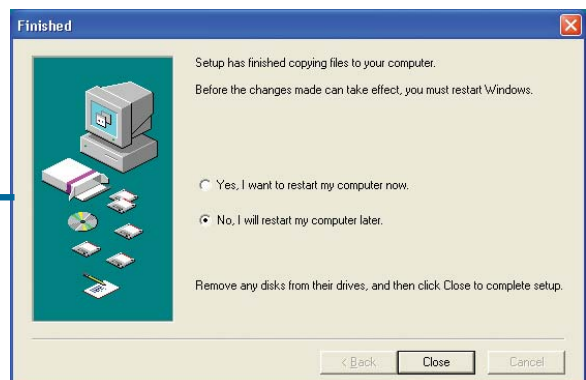
Only **Windows 98** users will see this screen.



Only **Windows XP** users will see this screen.



When this screen is displayed,
Shut Down
your computer.



2

Installing The DUB-C2 USB 2.0 Cardbus Adapter Into Your Computer

- A. **Make sure your Computer is Turned Off.**
- B. **Locate an available Cardbus slot.**
- C. **Insert the DUB-C2 into the Cardbus slot.**



Turn On your computer.

3

Completing The Driver Installation



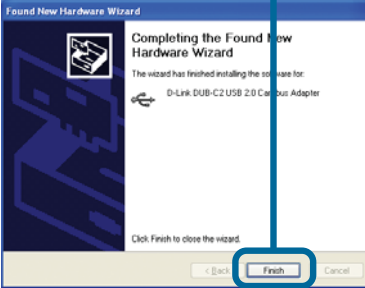

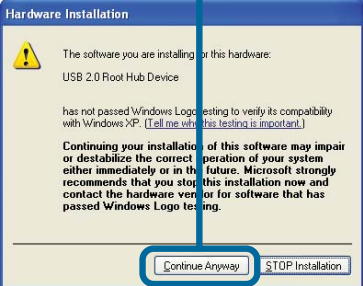
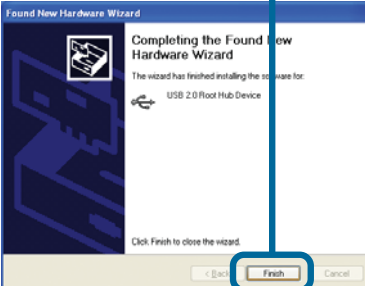
Section 3 includes instructions for all supported operating systems. Please locate the subsection that corresponds to the operating system that you are using to install the DUB-C2.

Windows 2000 & Windows Me Users

The DUB-C2 driver installation will proceed automatically for Windows 2000 & Me users while Windows is starting.

Windows XP Users

Follow these steps to complete installation under Windows XP for each device that Windows prompts you to install.

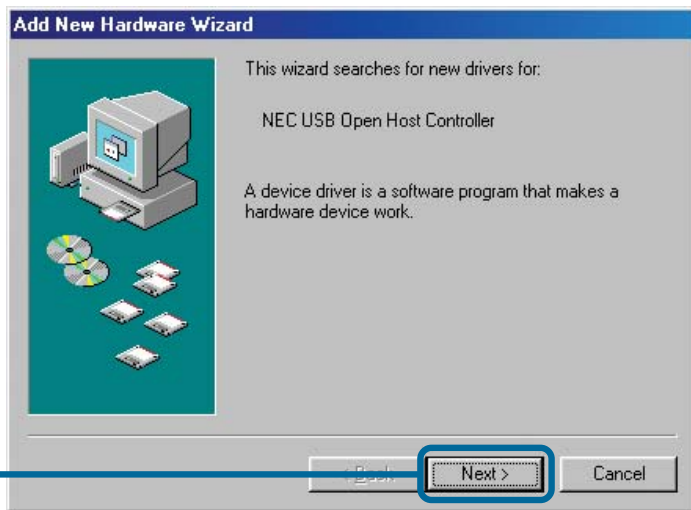
Click Next	Click Continue Anyway	Click Finish
		
		

The DUB-C2 installation is now complete.

Windows 98se/98 Users

Follow these steps to complete installation under Windows 98.

A.



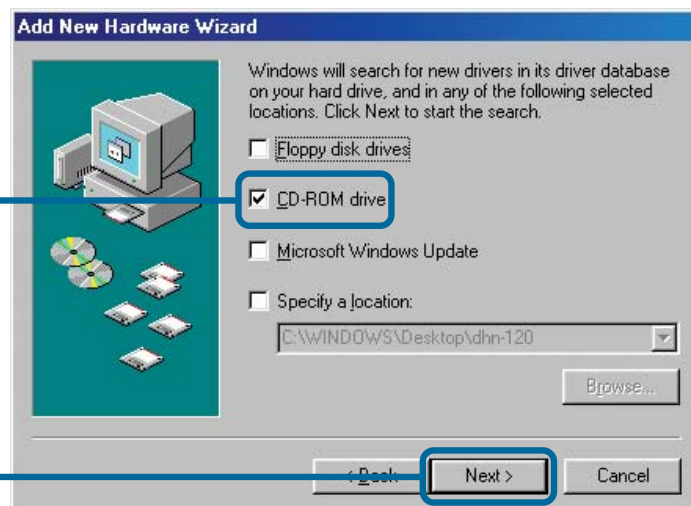
Click **Next**

B.



Click **Next**

C.

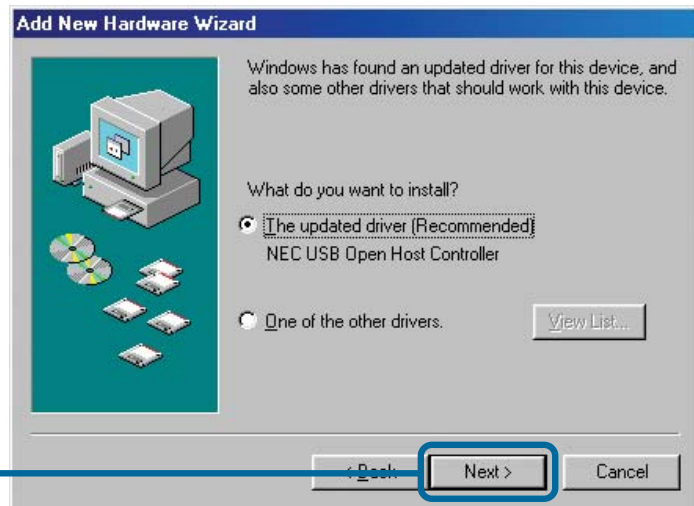


Select only **CD-ROM drive**

Click **Next**

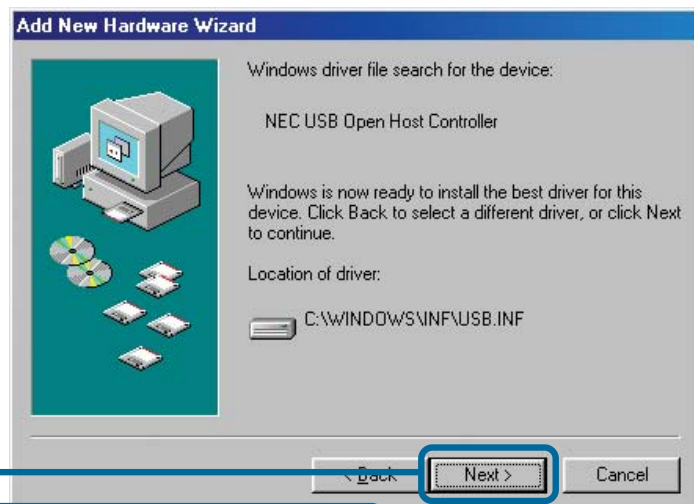
Windows 98se/98 *Continued...*

D.



Click **Next**

E.



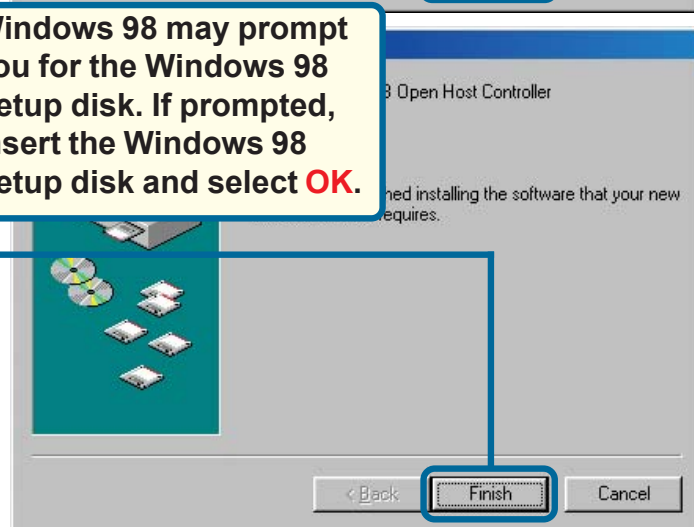
Click **Next**

F.

Windows 98 may prompt you for the Windows 98 Setup disk. If prompted, insert the Windows 98 Setup disk and select **OK**.

Click **Finish**

Repeat steps A-F again.



If prompted, **Restart Your Computer** to complete the installation.

Macintosh OS X 10.1 Users

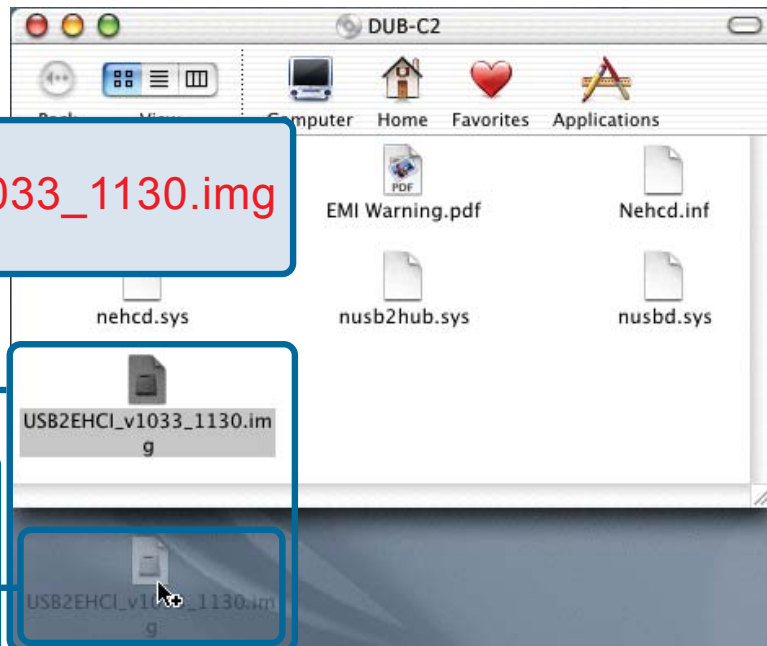
Follow these steps to complete installation under Macintosh OS X 10.1.

Insert the **DUB-C2 Driver CD**
into the CD-ROM drive.

Double-click **DUB-C2** when it
appears on the desktop



Drag-&-drop
USB2EHCI_V1033_1130.img
to the desktop

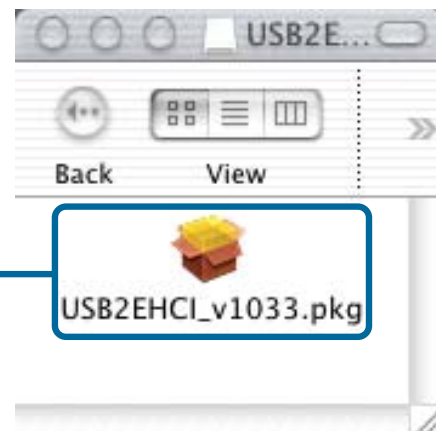


Double-click
**USB2EHCI-
V1033_1130.IMG**
from the
desktop

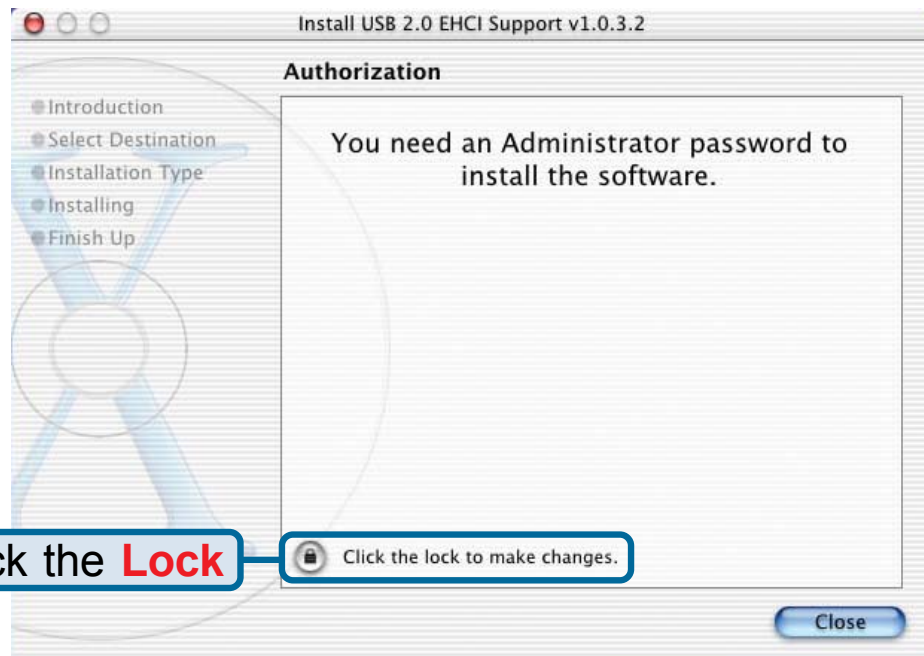
Double-click
USB2EHCI_V1033 when
it appears on the desktop



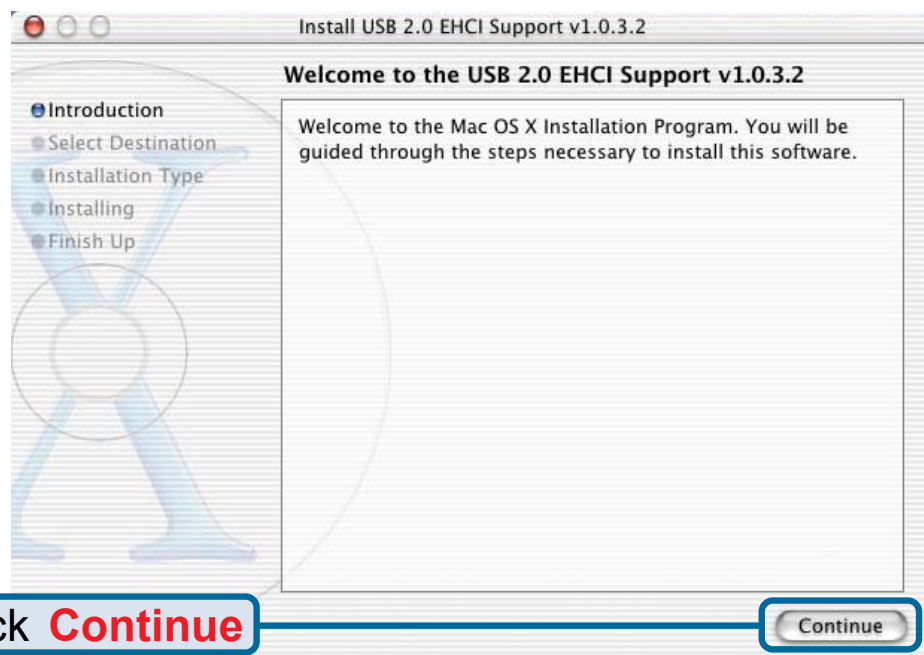
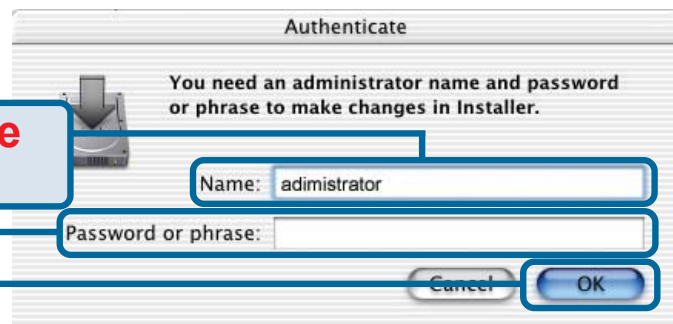
Double-click
USB2EHCI_V1033.pkg



Macintosh OS X 10.1 *Continued...*

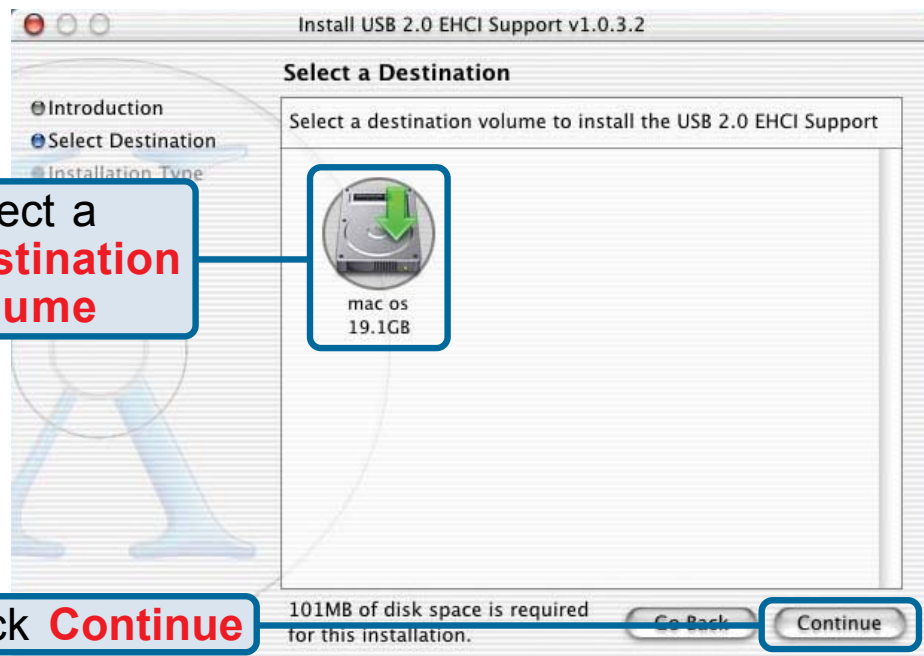


Enter your **Name**
& **Password**

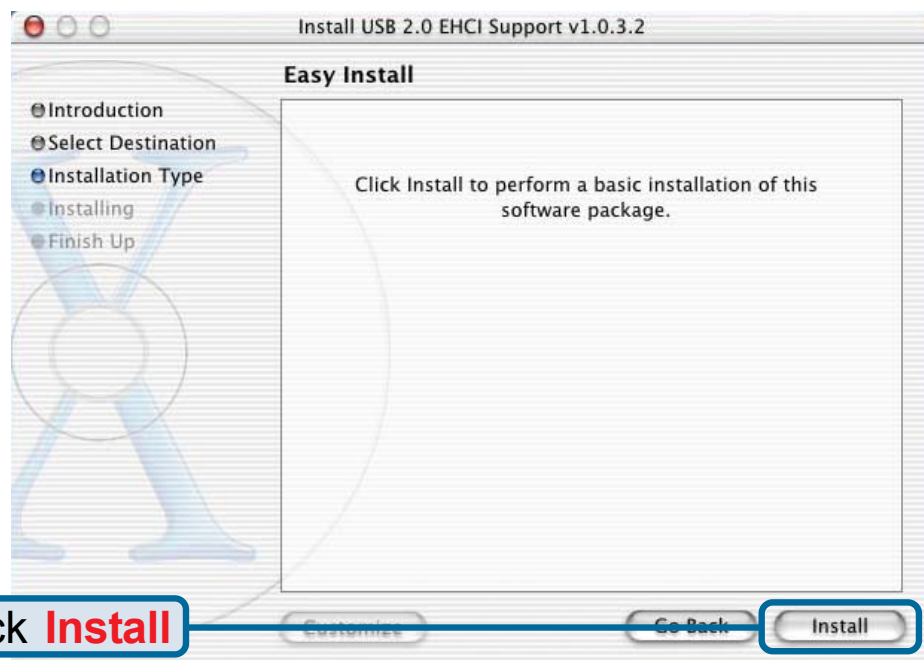


Macintosh OS X 10.1 *Continued...*

Select a
**Destination
Volume**

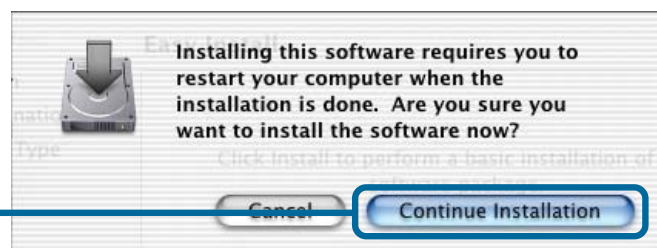


Click **Continue**

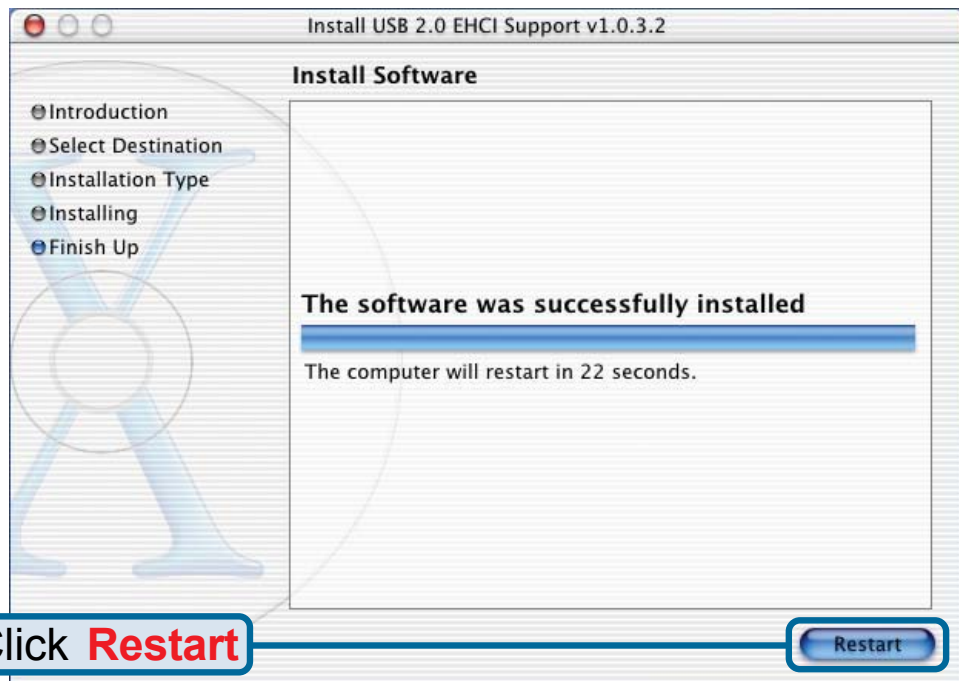


Click **Install**

Click **Continue
Installation**



Macintosh OS X 10.1 *Continued...*

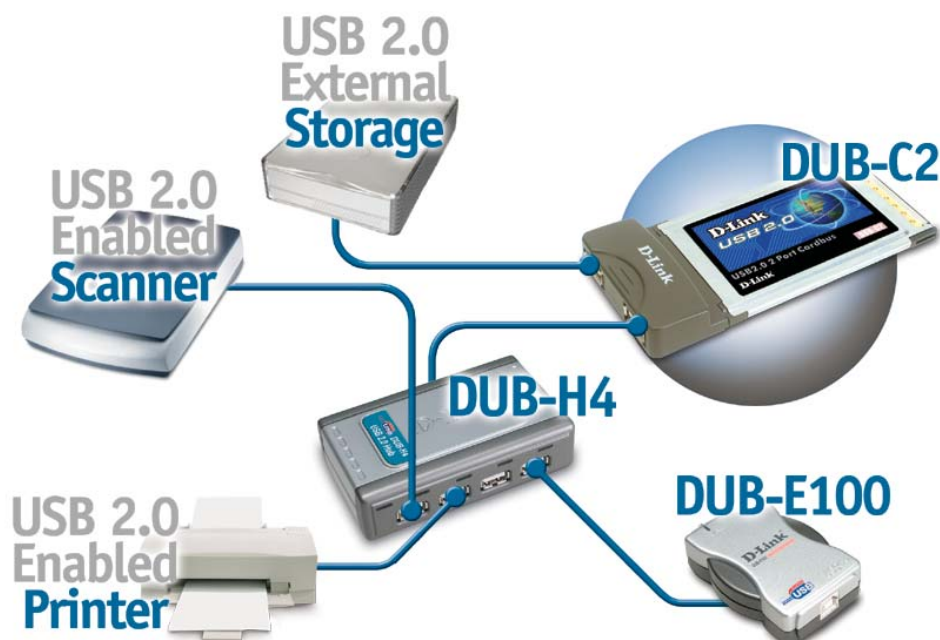


The DUB-C2 installation is now complete.

Typical DUB-C2 Installation

Once properly installed, the **DUB-C2 Hi-Speed USB 2.0 2-Port Cardbus Adapter** can be used to connect both USB 2.0 and USB 1.1 devices to any of its two USB ports.

The diagram below shows a typical installation using the DUB-C2 and other USB devices.





Introduction to USB 2.0 and Helpful Tips

Introduction

USB stands for Universal Serial Bus. It is a standard for connecting external devices to your computer quickly and easily. One of the nice things about USB is that power can be provided to the USB device through the USB cable. However, some devices such as printers need more power than the USB ports can provide, so those devices will have to use an external power source. USB also allows the device to be connected and removed from the PC without the need to shut -down the computer.

USB 2.0 is the second generation standard that improves on USB 1.1 to provide faster and more reliable data transfers. USB 1.1's speed of 12Mbps is extended to 480Mbps in USB 2.0. The improved speed and bandwidth opens up the possibility for newfound solutions such as external backup or data storage solutions, as well as digital audio and video solutions.

One important feature of the USB 2.0 standard is that it is backward compliant with USB 1.0 and USB 1.1. This means that all of your current USB products will work with USB 2.0 adapters.

Many USB products are widely available on the market and more are being developed for future release. Because of the high speed of the USB interface, a USB hub can be used to connect more than one USB device to one USB port at one time. The USB standard specifies that up to 127 devices can be connected to your computer.

Helpful Tips

- When connecting the USB cable to the computer, make sure that the USB cable is inserted securely.
- Remember that when connecting USB 1.0 or USB 1.1 products into a USB 2.0 adapter, the USB 1x product will not work faster.
- To ensure optimal performance when using USB 2.0 devices, use a USB 2.0 certified cable such as the DUB-C5AB.
- The DUB-C2 will work in Macintosh OS 8/9 at USB 1.1 speeds using the built-in drivers for the appropriate operating system.

Technical Support

You can find the most recent software and user documentation on the **D-Link** website.

D-Link provides free technical support for customers within the United States for the duration of the warranty period on this product.

U.S. customers can contact **D-Link** technical support through our web site or by phone.

D-Link Technical Support over the Telephone:

(877) 45D-LINK

(877) 453-5465

24 hours a day, seven days a week

D-Link Technical Support over the Internet:

<http://support.dlink.com>

email: support@dlink.com

