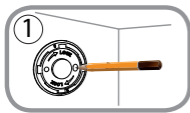


# Mounting the Camera

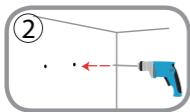
**D-Link**

Please refer to the steps below to assist you with mounting the camera. It is recommended that you configure the camera before mounting.



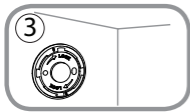
## Step 1:

Place the camera base where you want to position the camera and use a pencil to mark the holes. Make sure they are aligned and be careful not to move the base when marking the second hole.



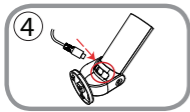
## Step 2:

Depending on the material of the wall or ceiling, use proper tools to drill two holes 25mm deep with a 6mm drill bit where you marked. If the wall is made out of concrete, drill the holes first, then insert the plastic anchors to support the screws.



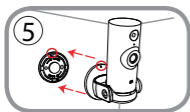
## Step 3:

Place the baseplate over the holes that are in the wall. Make sure to align the baseplate holes with the holes in the wall. Use the supplied screws to attach the baseplate to the surface of the wall.



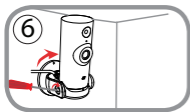
## Step 4:

Place the camera into the mount. Make sure that the power port in the back is exposed to the hole in the mount. Plug the USB power cable into the camera. Make sure it is plugged in all the way.



## Step 5:

Align the slash marking on the base to the same slash marking on the camera base. Press camera mount onto the base.



## Step 6:

Twist the camera mount slightly clockwise to the right to lock it into place. Using a coin or flathead screwdriver, tighten the screw on the left side of the camera mount to lock the camera angle into place.