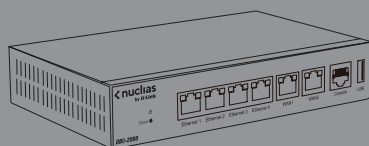




Quick Installation Guide

This document will guide you through the basic installation process for your new D-Link Nuclias Cloud Router

DBG-2000



About This Guide

This guide gives step by step instructions for setting up D-Link DBG-2000. Please note that the model you have purchased may appear slightly different from those shown in the illustrations.

Unpacking the Product

Open the shipping carton and carefully unpack its contents. Please consult the packing list located in following information to make sure all items are present and undamaged. If any item is missing or damaged, please contact your local D-Link reseller for replacement.

- One (1) DBG-2000 One (1) 12V/2A Power Adapter
- One (1) Console Cable (RJ45-to-DB9 Cable)
- One (1) Ethernet (CAT5 UTP/Straight Through) Cable
- Four (4) Rubber foot

Product Overview

This chapter provides detailed descriptions of the DBG-2000 device and its components.

Front Panel

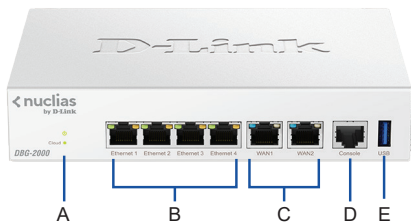


Figure 1. DBG-2000 Front Panel

Item	Feature	Description
A	LED (Top to bottom)	Power LED: Indicates the device is powered on.
B	Ethernet ports (1-4)	Connect Ethernet devices, such as computers, switches and hubs.
C	Gigabit WAN port (2)	Two auto MDI/MDIX WAN ports are the connection for the Ethernet cable to the cable or DSL modem.
D	Console Port (1)	Used to access Command Line Interface (CLI) via RJ45-to-DB9 console Cable.

E	USB Port (1)	It can support various USB 2.0, 3.0 devices below: 1.Flash Disk or Hard Disk for network sharing. 2.Printer (It will be supported by future firmware upgrade)
---	--------------	---

Table 1: DBG-2000 Front Panel Descriptions

Device Status LEDs and Ethernet Port LEDs



Figure 2. Ethernet RJ-45 Port LEDs

The device LEDs show information about current device status. When the device power up, the POWER/STATUS LED will show solid orange during power on process. Startup takes one minute approximately to complete, the LED will change to solid green. If you want to turn the device off and on again, we recommend you wait a few seconds between shutting it down and powering it back. The Ethernet LEDs show the status of each Ethernet port. Table 2 lists the name, color, status and description of each device LED.

LED Indicative	Color	Status	Description		
Power	Orange/ Green	Solid Orange	Device during power-on process		
		Solid Green	Completion of power on		
		Light Off	The device is power-off		
Cloud	Green/ Orange/ Red	Solid Orange	Device is connecting to Cloud		
		Solid Green	Device is in Cloud mode		
		Solid Red	Device is not in Cloud mode		
		Blinking Orange	Device is upgrading firmware or resetting factory default		
LAN RJ45 Phone Jack	Green/ Amber	Right Side			
		Solid Amber	10/100Mbps Link Present		
		Blinking Amber	There is activity on this port		
		Light Off	No link		
		Left Side			
		Solid Green	1000Mbps Link Present		
		Blinking Green	There is activity on this port		
		Light off	No Link		
		WAN RJ45 Phone Jack	Blue/ Green/ Amber	Right Side	
				Solid Green	1000Mbps Link Present
Solid Amber	10/100Mbps Link Present				
Blinking Green/Amber	There is activity on this port				
Light Off	No link				
Left Side					
Solid Blue	2.5Gbps Line Present				
Blinking Blue	There is activity on this port				
Light Off	No link				

Table 2: Device Status LED Descriptions

DBG-2000 Default Interface Settings

Ethernet Interface	Interface Type	IP Address	Web-Based Management	DHCP Client
LAN(1-4)/WLAN	Static IP	192.168.10.1	Enabled	Enabled
WAN	DHCP Client	0.0.0.0	Disabled	Disabled

Table 3: Default Interface Settings

Note: DBG-2000 allows Web GUI access from LAN and Wireless interfaces by default for security reason.

Installing and Connecting the Device

This chapter describes how to connect cables and power to the device.

Before You Begin

Observe the following precautions to help prevent shutdowns, equipment failures and injuries:

- Before installation, always check that the power supply is disconnected
- Ensure that the room in which you operate the device has adequate air circulation and that the room temperature does Not exceed 40°C (104°F)
- Allow 1 meter (3 feet) of clear space to the front and back of the device.
- Do not place the device in an equipment rack frame that blocks the air vents on the sides of the chassis. Ensure that enclosed racks have fans and louvered sides.
- Correct these hazardous conditions before any installation: moist or wet floors, leaks, ungrounded or frayed power cables, or missing safety grounds.

Connecting Power and Turn the Device On/Off

The AC/DC Power Adapter shipped with the device connects the device to earth ground when plugged an AC grounding-type power outlet. The device must be connected to earth ground during normal operation.

To connect power to the device, plug the AC/DC power adapter into the DC power phone jet on the

back panel of the device.

Note: We recommend using a surge protector for the power connection.

To power on the DBG-2000 device, press the DC power switch on the rear panel to the on position. To power off the device, press the power switch to the off position.

Connecting the Device to a Network

This section provides basic information about physically connecting the DBG-2000 to a network. To connect the necessary cables as shown in Figure 3.

1. Connect an RJ-45 cable from the port labeled WAN to the external router. The port WAN is pre-allocated to the WAN network segment.
2. Connect an RJ-45 cable from the port labeled LAN (1-8) to a switch in the LAN network segment.
3. Connect an RJ45-to-DB9 cable from the console port for CLI (Command Line Interface) management access.

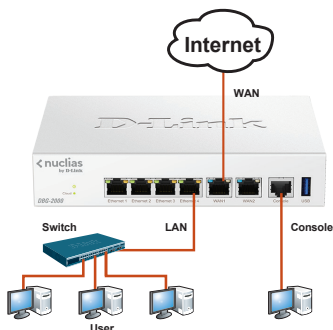


Figure 3. Basic Cabling Example

Initially Configure the Device

The software is preinstalled on the DBG-2000 device. When the device is powered on, it is ready to be configured. While the device has a default factory configuration that allow you to initially connect to the device, you must perform further configuration for your specific network requirements.

Using the WebUI

To use the WebUI, the workstation from which you are managing the device must initially be on the same subnetwork as the device.

To access the device with the WebUI:

1. Connect your workstation on the port labeled LAN (1-4), which is pre-allocated to the LAN.
2. Ensure your workstation is DHCP Client enabled or configured with a static IP address in the 192.168.10.0/24 subnet.
3. Log on the device web interface the default log on information is:

Username: admin

Password: admin

Figure 4. Authentication Message

Using a Console Connection (RJ45-to-DB9 DCE)

The DBG-2000 provides a serial port that enables a connection to a computer or terminal for monitoring and configuring the device. This port is a RJ-45 connector, implemented as a data communication terminal equipment (DCE) connection.

To use the console port connection, you need the following equipment:

1. A terminal or a computer with both a serial port and the ability to emulate a terminal.
2. A RJ45-to-DB9 RS-232 with female connector. (Already included in packing list)
3. If your Laptop or PC doesn't have RS-232 connector, a converter is required.

Note: DBG-2000 does not come with RS-232 converter and these must be purchased separately.

To establish a console connection:

1. Plug the RJ-45 connector of the supplied RJ45-to-DB9 cable directly to the console port on the device.
2. Connect the other end of the cable to a terminal or to the serial connector of a computer running terminal emulation software. Set the terminal emulation software as following:

Baud rate: 115200

Data bits: 8

Parity: None

Stop bits: 1

Flow control: None

3. When you have correctly set up the terminal, having previously followed the instructions in section "Connecting Power and Turn the Device On/Off" then switch on your device. The boot sequence appears in the terminal.
4. Once the boot sequence completes, the command prompt is displayed, the device is ready to be configured.

Technical Support

<https://www.dlink.com/support>

D-Link[®]



Ver. 1.00
2023/02/13